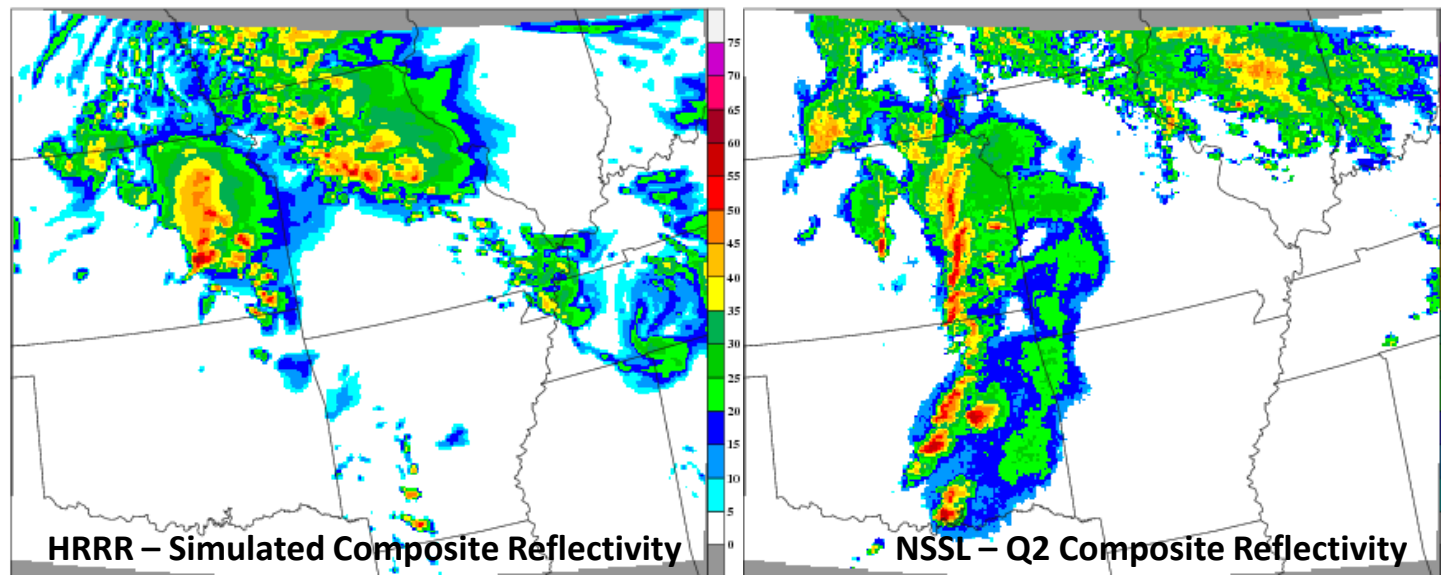
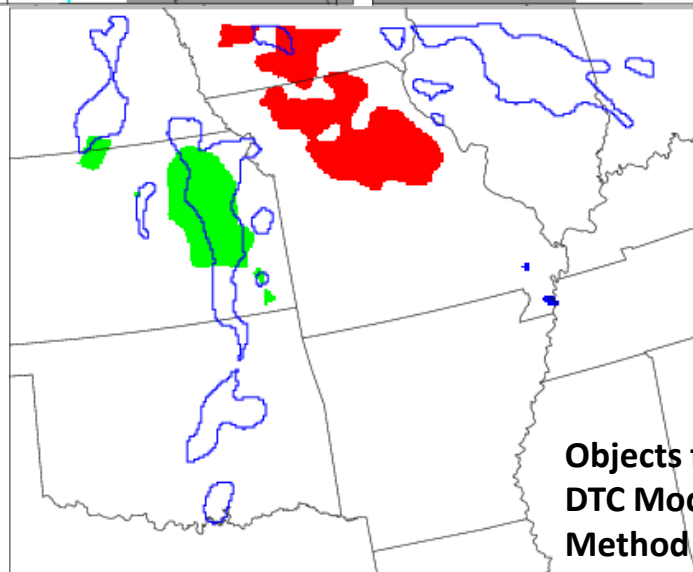





# Example of Object-Oriented Verification Method



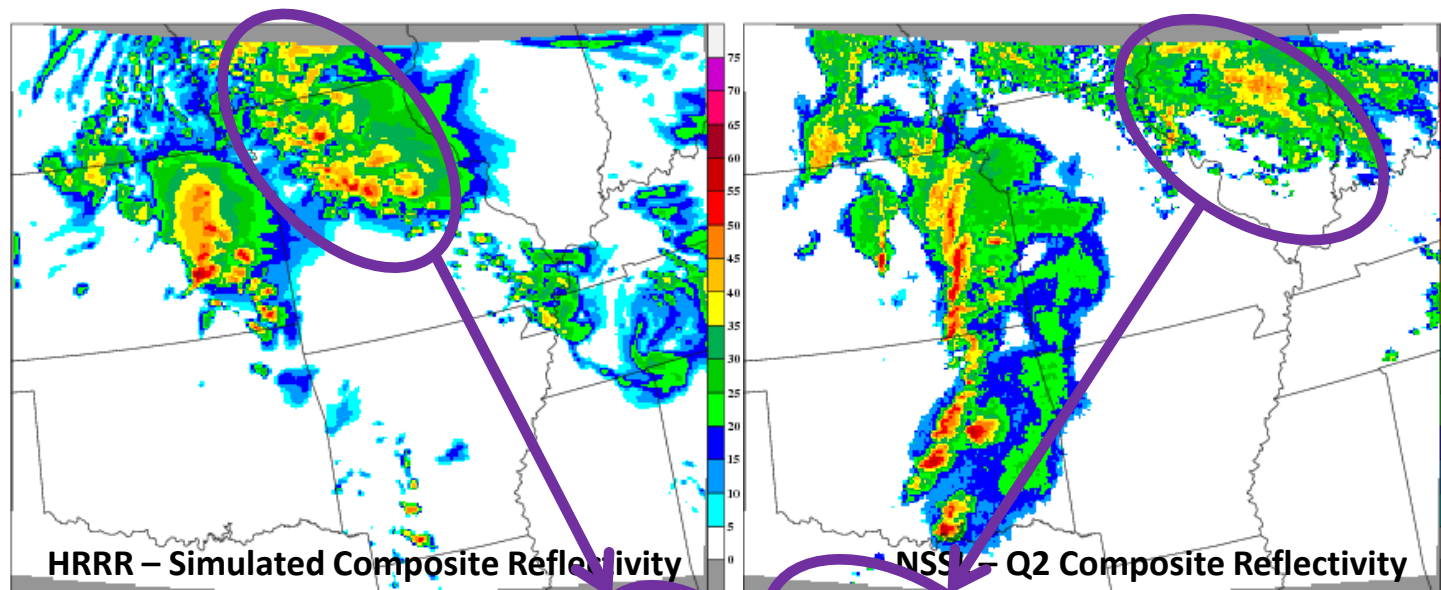
12 hour Forecast  
Valid:  
11 May 2010 - 00 UTC



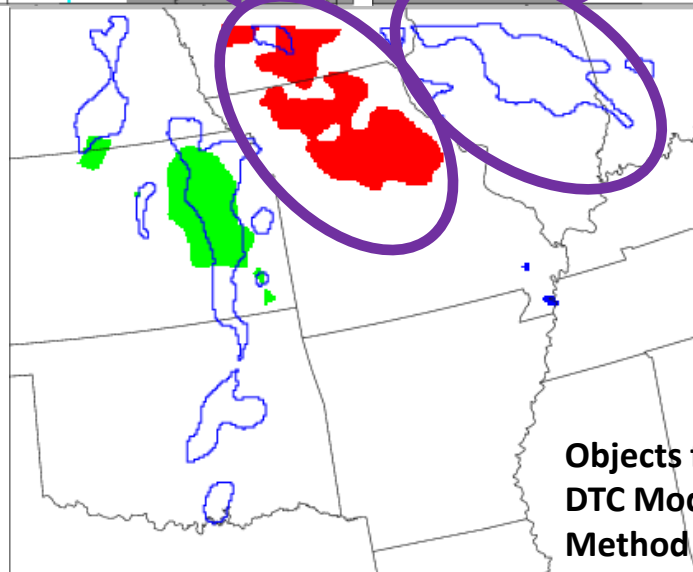
- Matched**
-  **Fcst Object #1**
-  **Fcst Object #2**
-  **Observed Objects**

Objects from  
DTC Model Evaluation Tool  
Method for Object Based Diagnostic Evaluation

# Example of Object-Oriented Verification Method



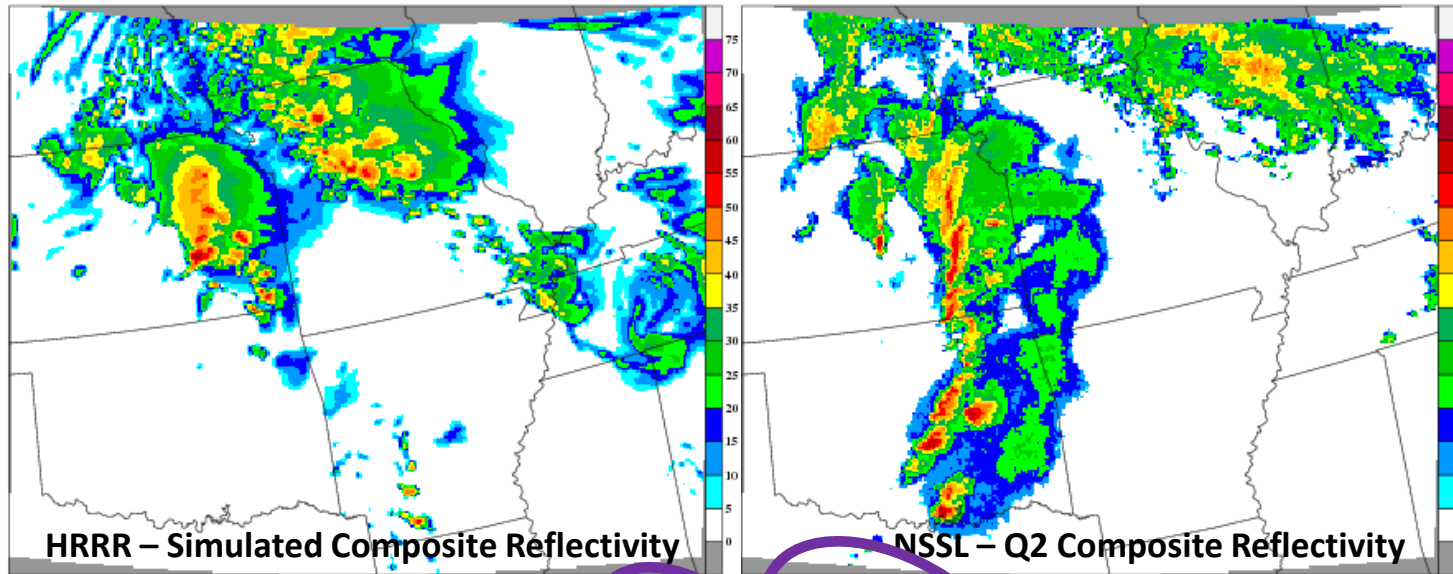
12 hour Forecast  
Valid:  
11 May 2010 - 00 UTC



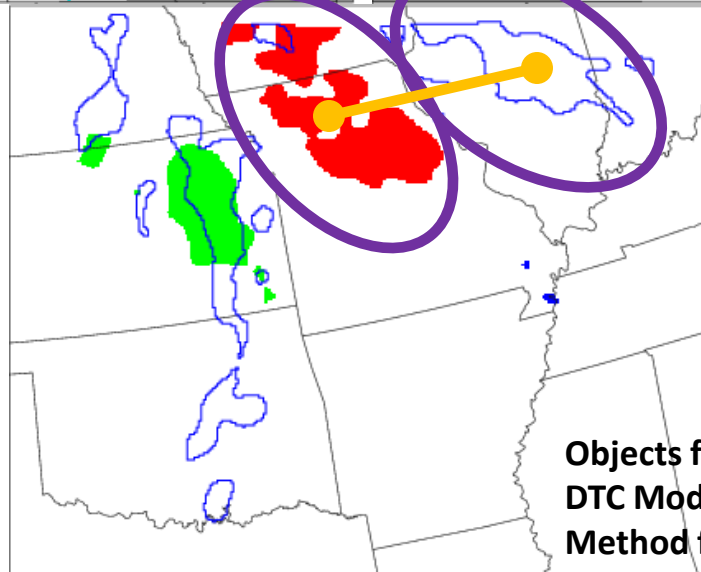
- Matched**
- Fcst Object #1**
- Fcst Object #2**
- Observed Objects**




Objects from  
DTC Model Evaluation Tool  
Method for Object Based Diagnostic Evaluation

# Example of Object-Oriented Verification Method



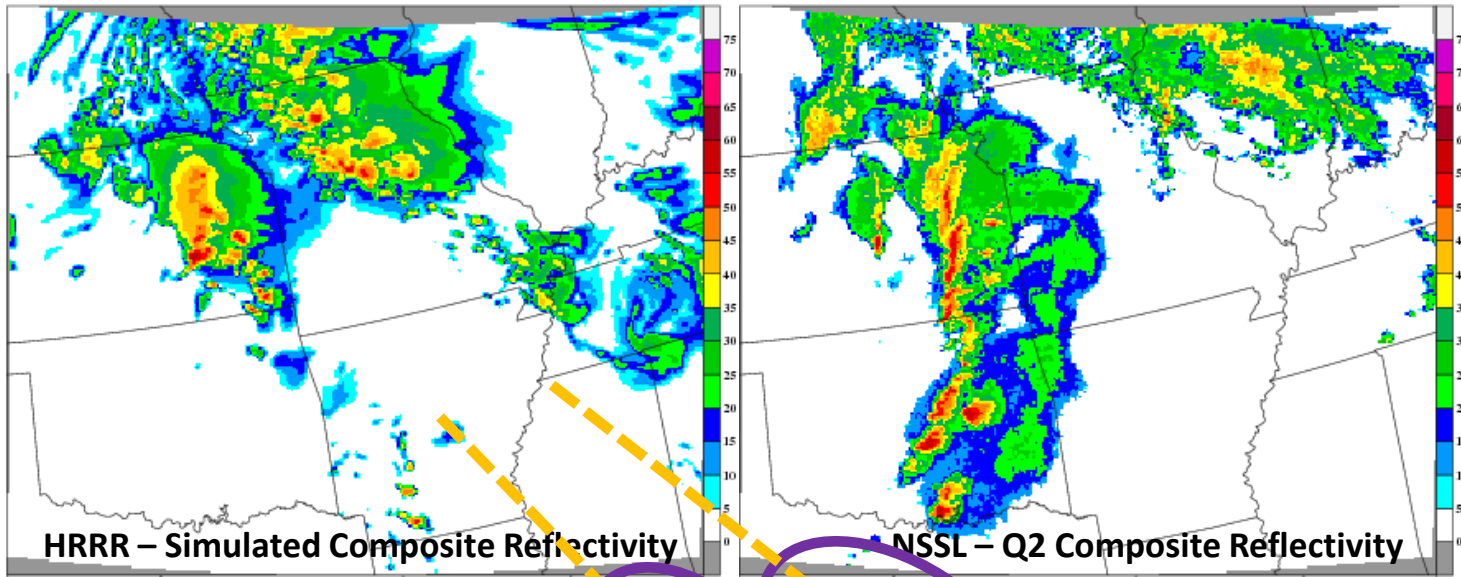
12 hour Forecast  
Valid:  
11 May 2010 - 00 UTC



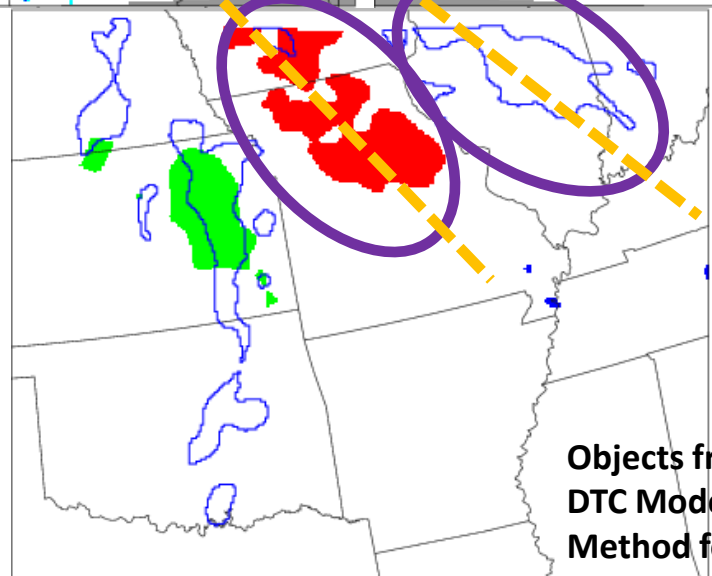
- Matched**
-  Fcst Object #1
-  Fcst Object #2
-  Observed Objects




Objects from  
DTC Model Evaluation Tool  
Method for Object Based Diagnostic Evaluation

# Example of Object-Oriented Verification Method



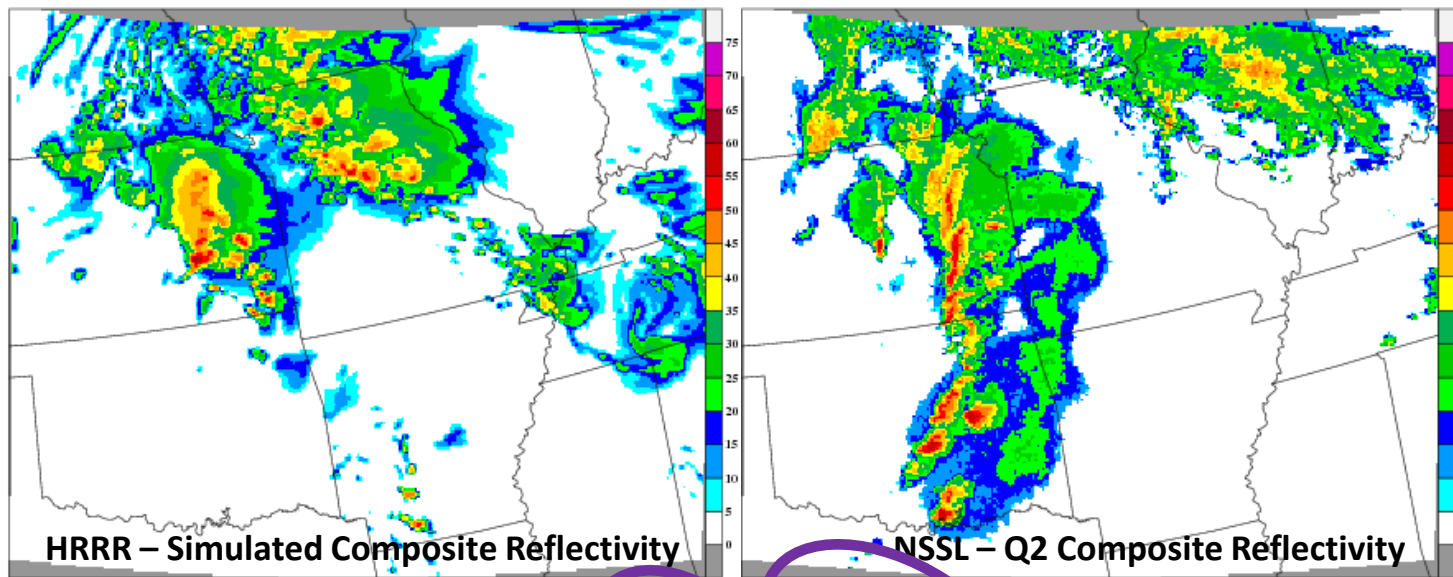
12 hour Forecast  
Valid:  
11 May 2010 - 00 UTC



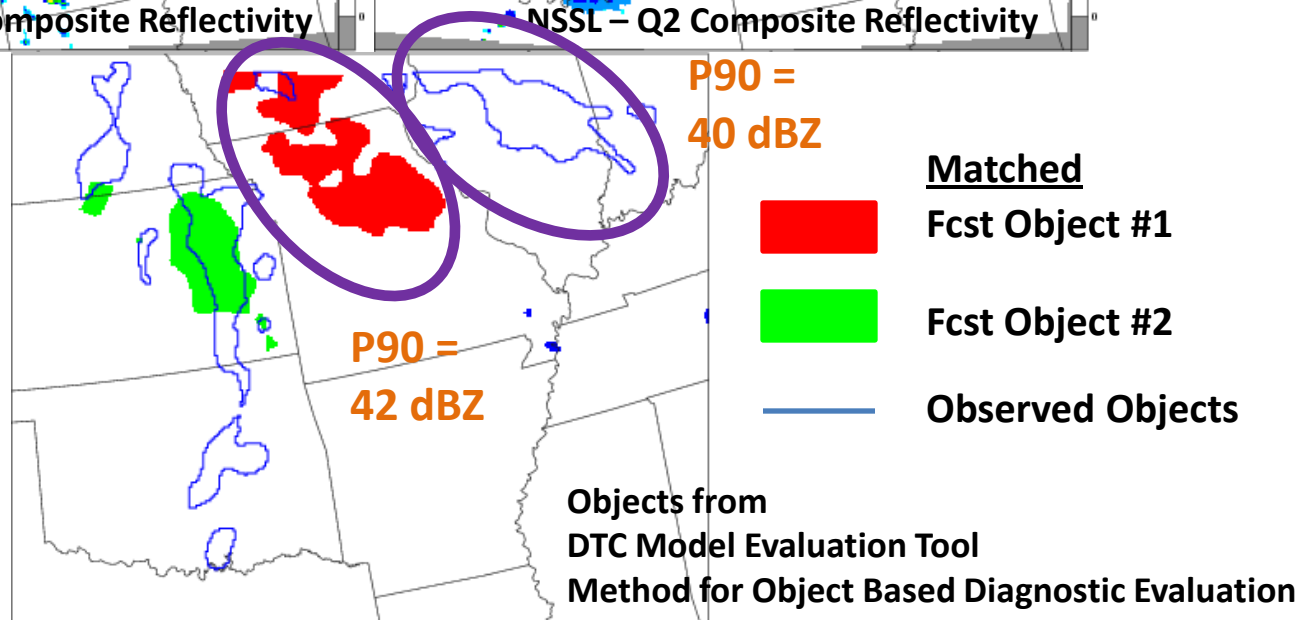
- Matched**
-  Fcst Object #1
-  Fcst Object #2
-  Observed Objects

Objects from  
DTC Model Evaluation Tool  
Method for Object Based Diagnostic Evaluation

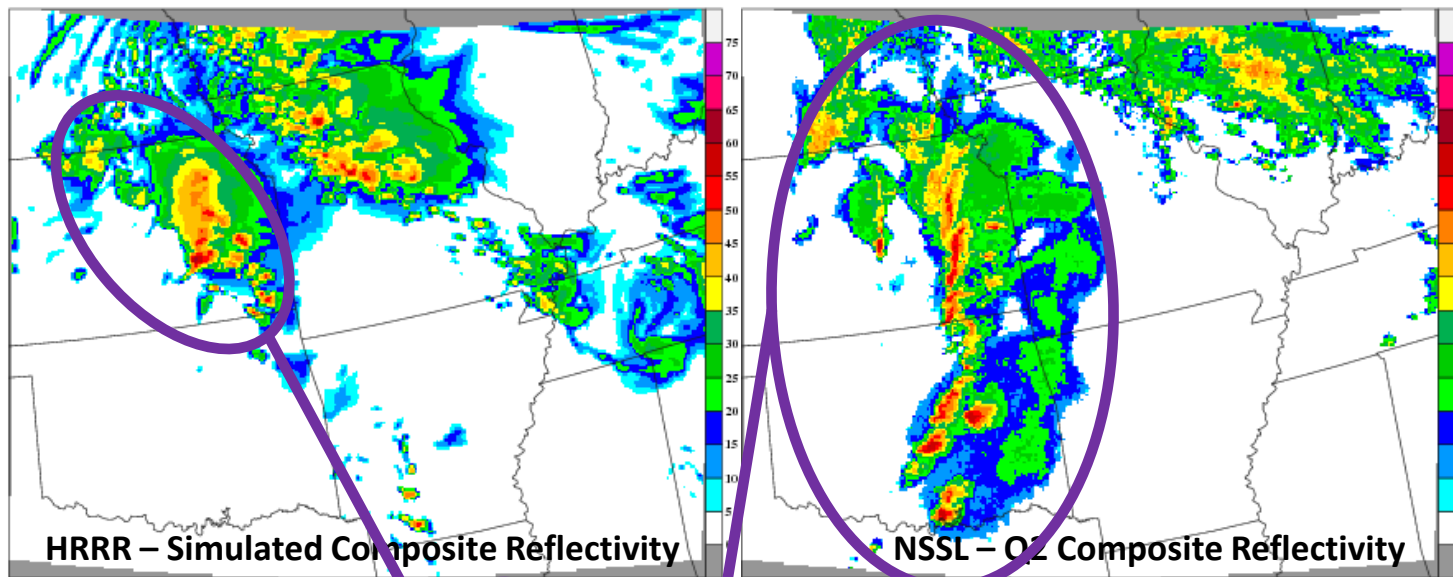
# Example of Object-Oriented Verification Method



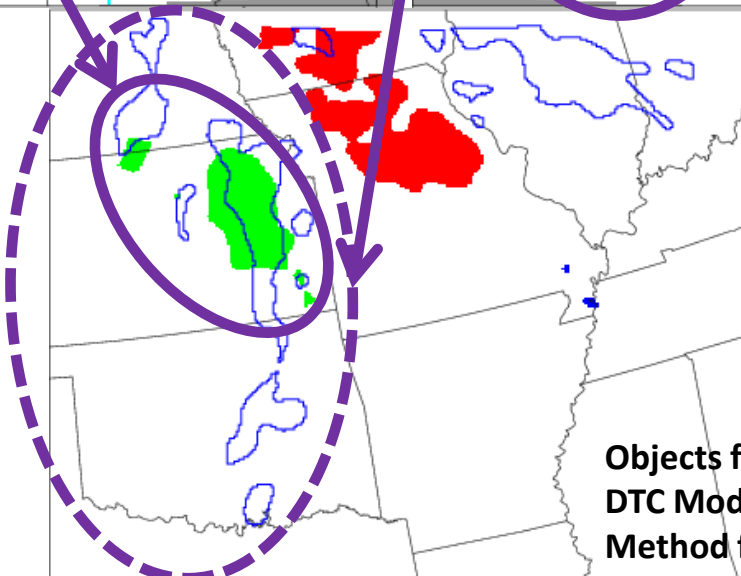
12 hour Forecast  
Valid:  
11 May 2010 - 00 UTC






# Example of Object-Oriented Verification Method

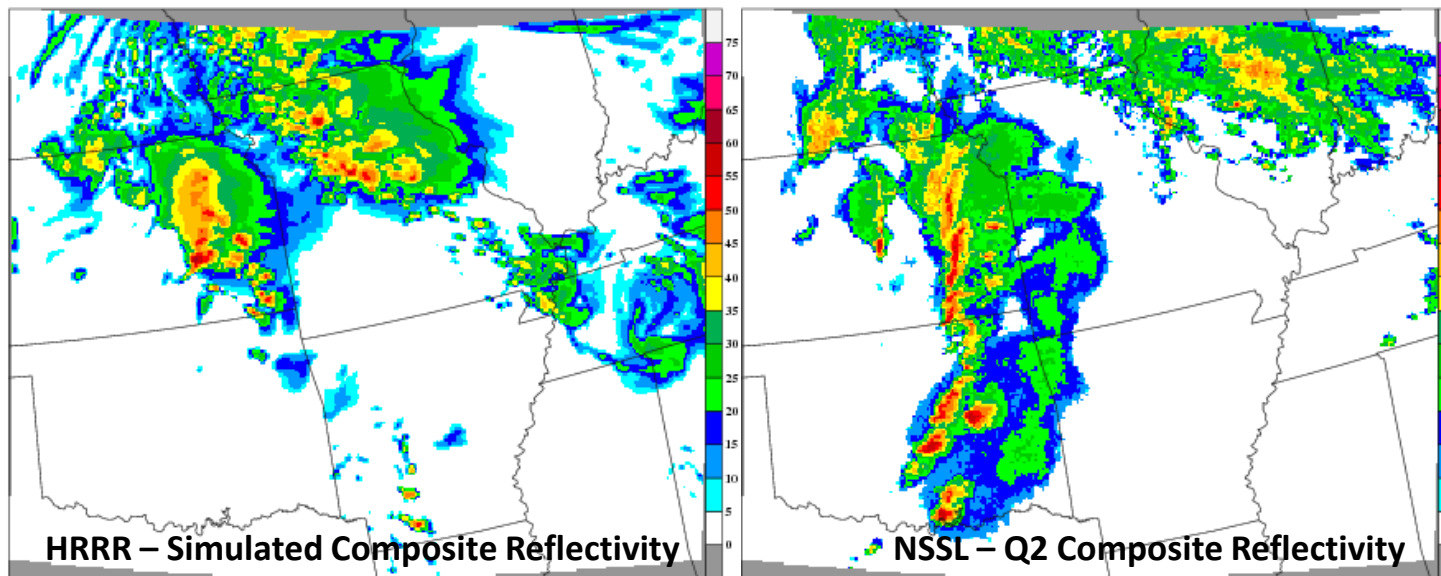


12 hour Forecast  
Valid:  
11 May 2010 - 00 UTC

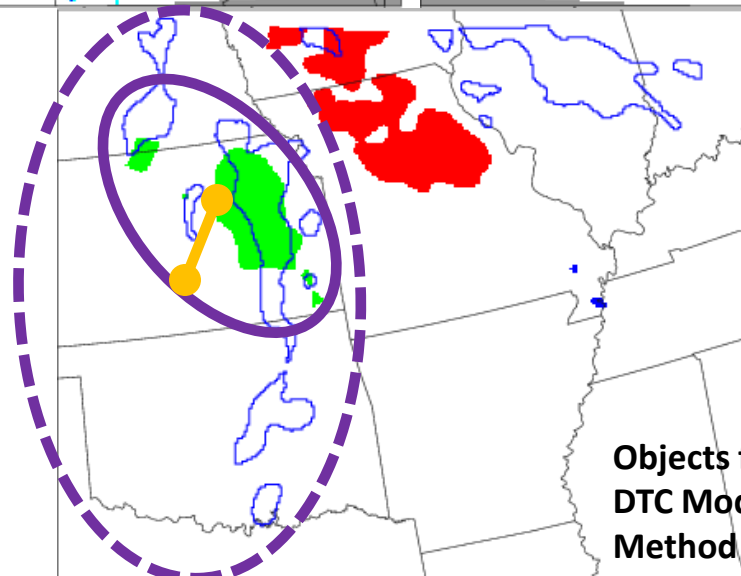


- Matched**
-  Fcst Object #1
-  Fcst Object #2
-  Observed Objects

# Example of Object-Oriented Verification Method

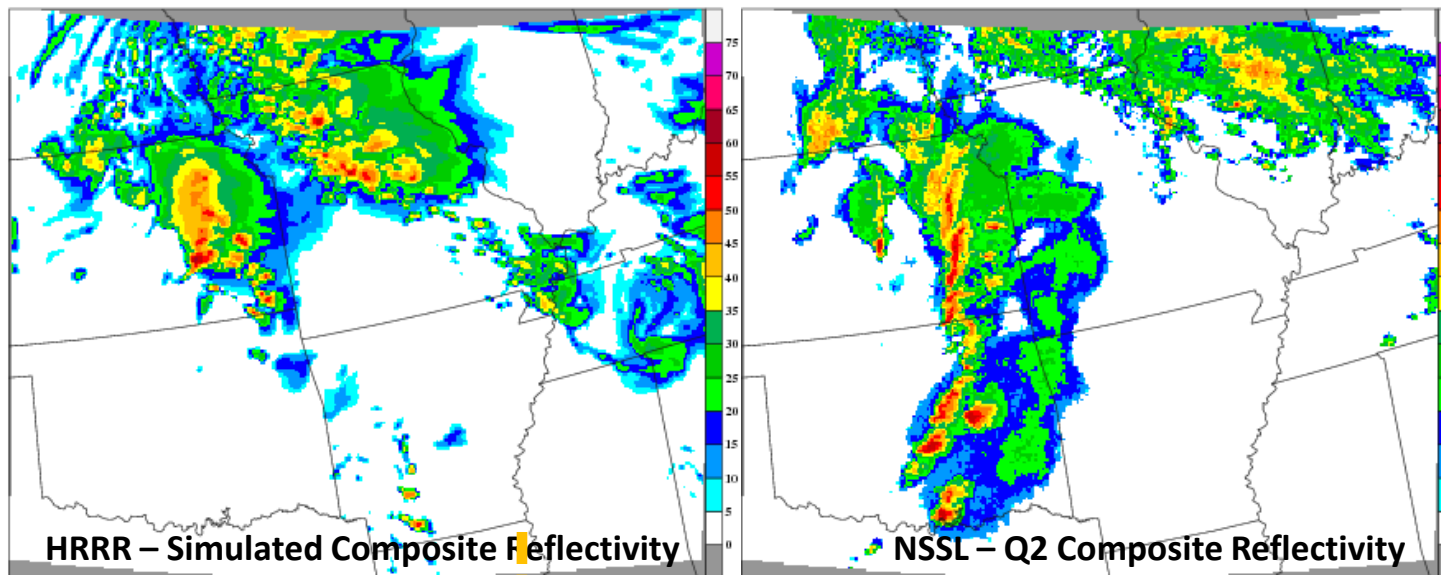


12 hour Forecast  
Valid:  
11 May 2010 - 00 UTC

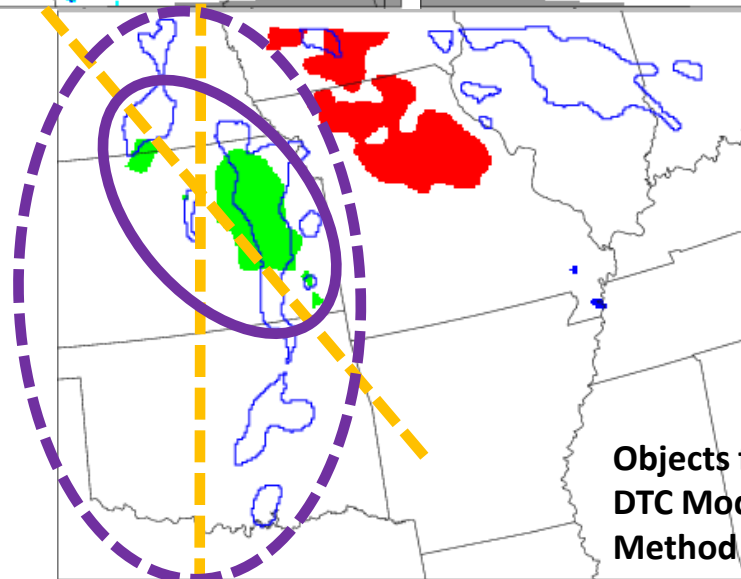





Objects from  
DTC Model Evaluation Tool  
Method for Object Based Diagnostic Evaluation

# Example of Object-Oriented Verification Method



12 hour Forecast  
Valid:  
11 May 2010 - 00 UTC

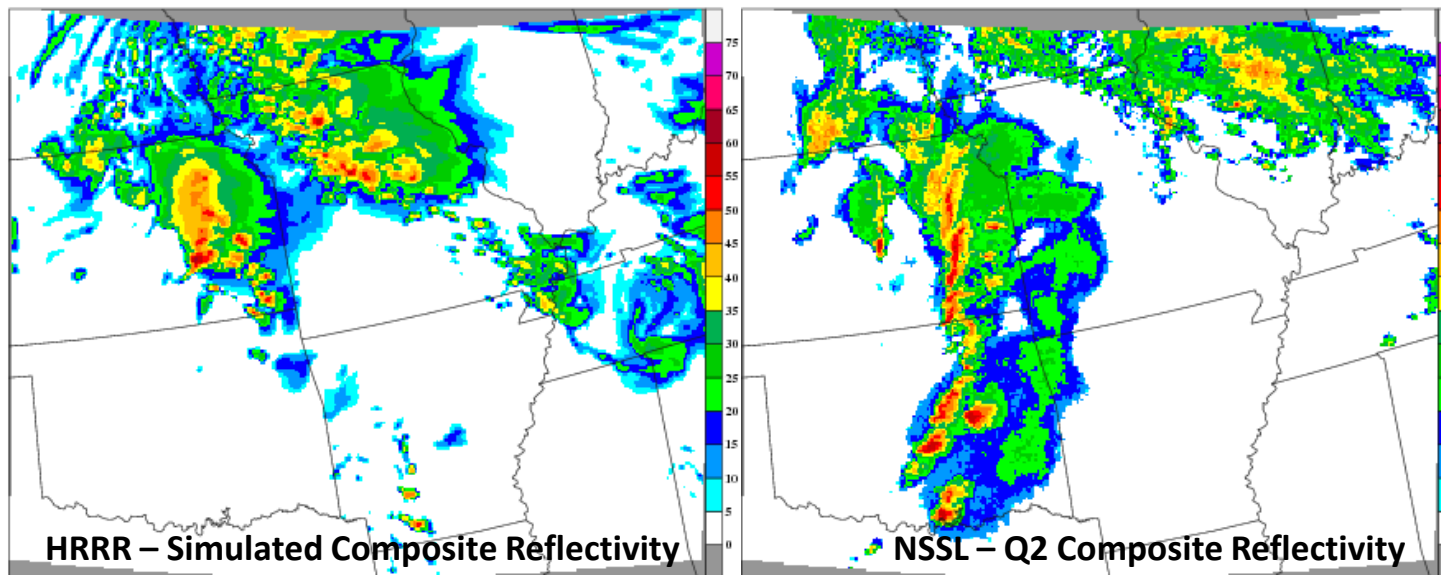


- Matched**
-  Fcast Object #1
-  Fcast Object #2
-  Observed Objects

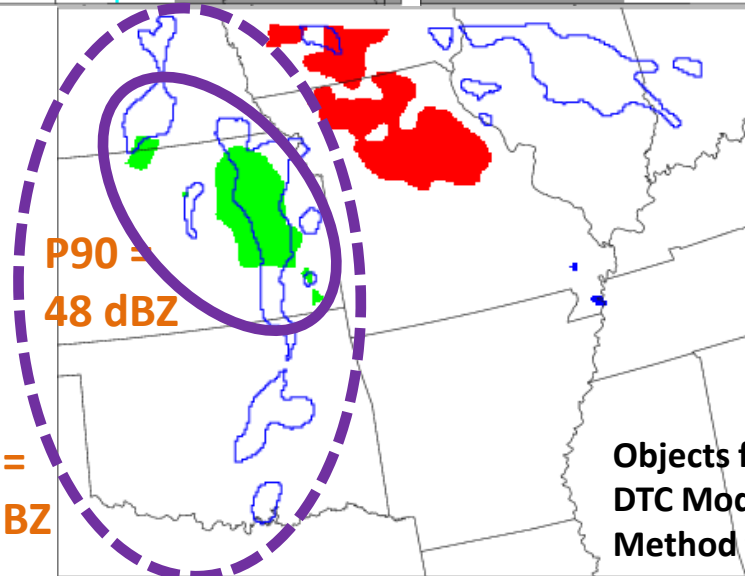
Objects from  
DTC Model Evaluation Tool  
Method for Object Based Diagnostic Evaluation






# Example of Object-Oriented Verification Method



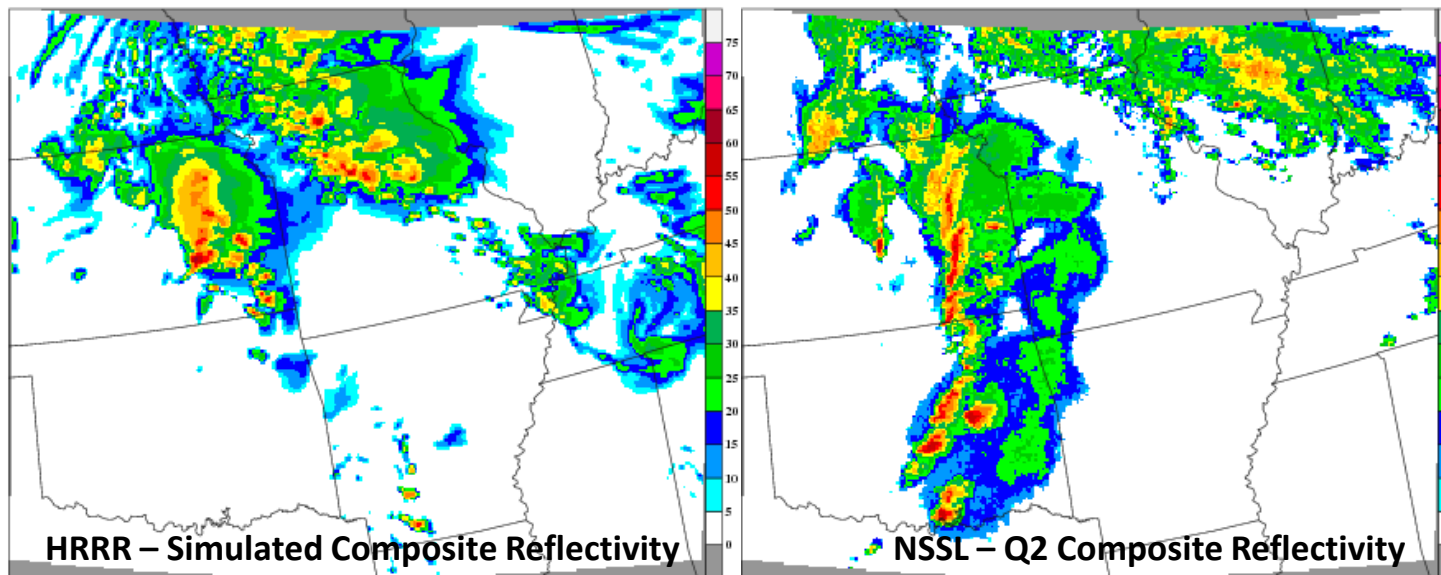
12 hour Forecast  
Valid:  
11 May 2010 - 00 UTC



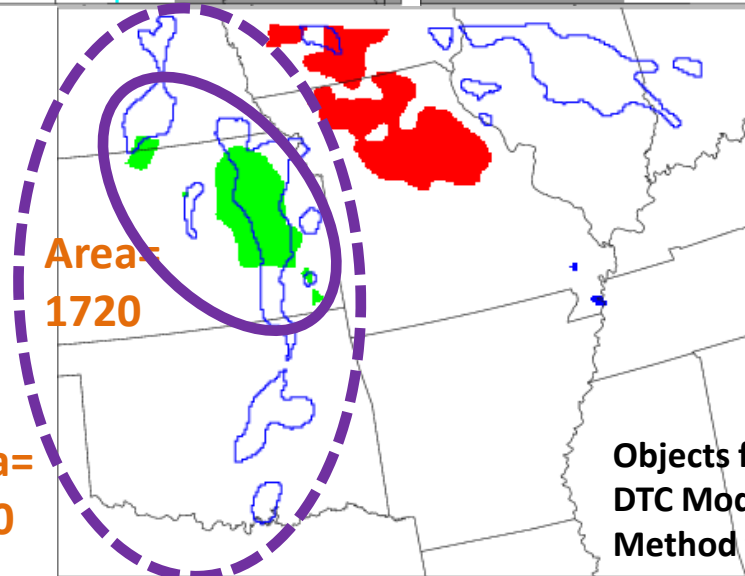
- Matched**
-  **Fcst Object #1**
-  **Fcst Object #2**
-  **Observed Objects**




Objects from  
DTC Model Evaluation Tool  
Method for Object Based Diagnostic Evaluation

# Example of Object-Oriented Verification Method



12 hour Forecast  
Valid:  
11 May 2010 - 00 UTC



- Matched**
-  Fcst Object #1
-  Fcst Object #2
-  Observed Objects

Objects from  
DTC Model Evaluation Tool  
Method for Object Based Diagnostic Evaluation